



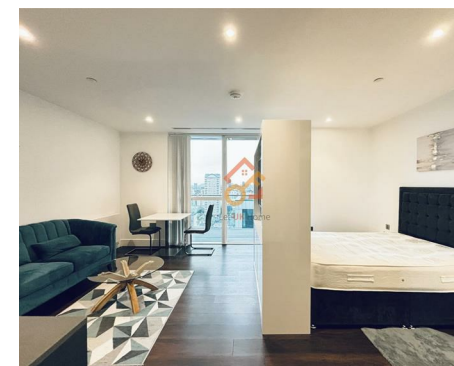
Let **UK** Home

1 Bedrooms

Flat - Studio

Located in London

**£2,200 Per Month**



[info@letukhome.co.uk](mailto:info@letukhome.co.uk)

<https://www.letukhome.co.uk/>

01795 358 886



# 9 Harbour Way London

E14 9DX



Let UK Home are excited to offer this spectacular studio apartment in the heart of Maine Tower part of the Harbour Central.

The studio comprises a spacious open kitchen with a stylishly attached dining area, a magnificent living room leading to a large private balcony with great views, one bright bedroom with built-in wardrobe, one modern bathroom and ample storage.

The apartment is equipped with communal courtyards and fountains. Residents will enjoy fitness and entertainment facilities including gym, private cinema, meeting room, residents lounge and concierge service.

The area where the development is located has many landmarks, art centers, museums, and theaters, such as London Bridge, the Royal Observatory Greenwich, Canary Wharf Arts Centre, the Museum of London, and the Royal Institute of British Architects, creating a strong artistic and cultural atmosphere. Additionally, there is a Chinese supermarket, Tiantian Supermarket, nearby, along with numerous Asian restaurants, bubble tea shops, and snack bars. At the same time, the nearby Canary Wharf has many shops, cafes, and bars, offering everything from brand stores and shopping streets to shopping malls.

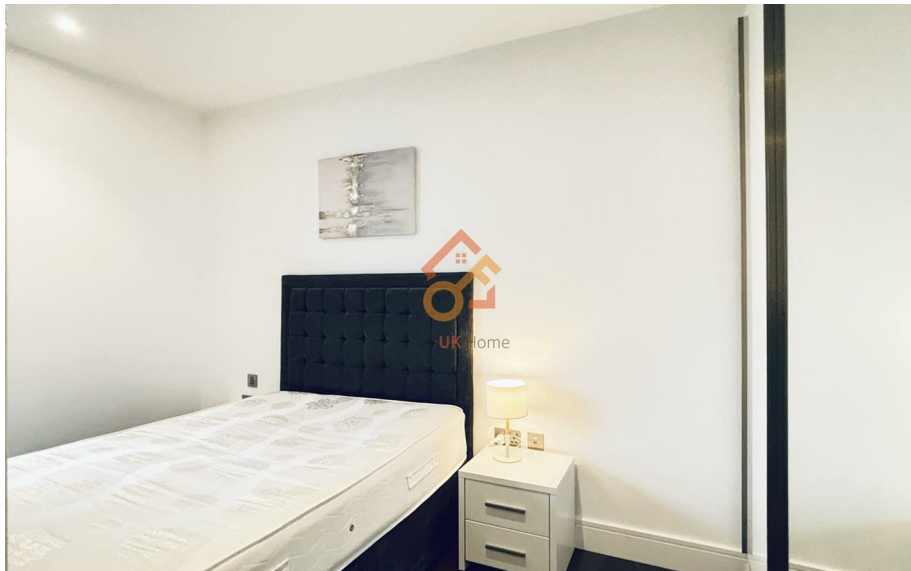
The apartment is within walking distance of the DLR station, making it easy to reach important stations such as Canary Wharf Underground Station and the City of London. From Canary Wharf Station, you can take the Jubilee subway line to quickly reach various areas in London.

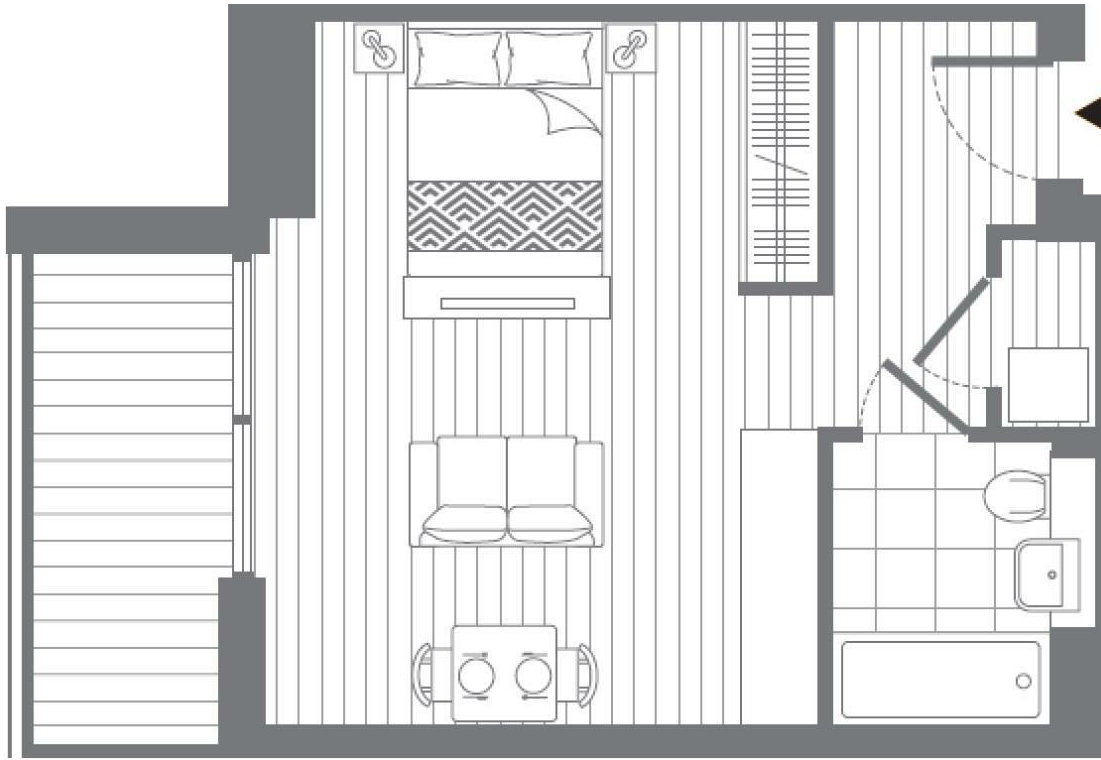
# 9 Harbour Way London

£2,200 Per Month



- 13th Floor
- 24h Security
- Residents Lounge
- EPC Rating: B
- Concierge Service
- The Gym
- Cinema & Game Room





**Total floor area**

**34 square metres**



Let **UK** Home

3F 2 Eastbourne Terrace

Paddington

London

W2 6LG

01795 358 886

info@letukhome.co.uk

**Council Tax Band: E**

**Local Authority:**

Agents Note: Whilst every care has been taken to prepare these particulars, they are for guidance purposes only. All measurements are approximate and are for general guidance purposes only and whilst every care has been taken to ensure their accuracy, they should not be relied upon and potential buyers/tenants are advised to recheck the measurements.

Energy Efficiency Rating		Current	Potential
Very energy efficient - lower running costs			
(92 plus) <b>A</b>			
(81-91) <b>B</b>		84	84
(69-80) <b>C</b>			
(55-68) <b>D</b>			
(39-54) <b>E</b>			
(21-38) <b>F</b>			
(1-20) <b>G</b>			
Not energy efficient - higher running costs			
<b>England &amp; Wales</b>		EU Directive 2002/91/EC	

<https://www.letukhome.co.uk/>